

Isl of Kent - 1631

To Discover, Identify, Restore and Preserve the Heritage of Kent Island

NEWSLETTER OF THE KENT ISLAND HERITAGE SOCIETY, INC.

FALL 2025

Officers

PRESIDENT

Jack E. Broderick

VICE PRESIDENT

Robert Lowe

RECORDING

SECRETARY

Lou Crouch

TREASURER

Erika Kriegisch

DIRECTORS

Wheeler Baker

Donna Brown

Josh Brown

Linda Collier

John Conley

Carole P. Frederick

Kristin Bombard-Green

Mike Rosendale

Joan Stoer

Harrison Van Waes

Hanna Wall

PAST PRESIDENTS

Marian Steuart 75-77

Gordon Seward 77-79

Julius Grollman 79-81

Mary White 81-82

Walter T. Denny 83-84

Eva C. White 85-86

C. Gilbert Dunn 87-89

Audrey Hawkins 90-92

Charles Koegel 93-94

Hugo Gemignani 95-98

Nancy M. Cook 99-08

Don't Miss our Docent and Historic Sites Meeting on September 13

Dear Kent Island Heritage Society members, current docents, new trainees, and FRIENDS.

Would you like to learn more about our history and heritage? Would you like to help us tell our story? Here's your chance to learn more about the history and heritage of Kent Island, Stevensville, our Historic Sites, and help the Kent Island Heritage Society!

JOIN US ON SEPTEMBER 13, 2025, from 10:00 – 12:00 at the KENT ISLAND LIBRARY Room 133 and meet members of the Kent Island Heritage Society.

This is your opportunity to meet new friends and come again for a review, training and to get more familiar with our Sites and Docents. Light refreshments will be served and docent handbooks will be supplied. *Please respond by calling Hanna Wall at 410-924-1069 or emailing her at hwall506@gmail.com.*



President's Message

Summer on Kent Island has its own special magic that is part of our living heritage - the birds, the lush greenery, the ever-changing sky, the sunsets and those full moons, our waterways and boats of all sizes and shapes, our great crabs again this year, and iconic crab feasts. Our heritage is reflected in our unique communities, our historic sites, busy parks, family gatherings, and friendly inviting businesses enjoyed by locals and visitors alike! It sounds like a commercial, but there's a lot to love about our historic Island and

our wonderful inviting culture. Of course we have our challenges, traffic-wise, weather-wise, and otherwise. But if we are aware and flexible we can adjust and enjoy this special place. In the Kent Island Heritage Society, we are committed to preserving and celebrating the best of our heritage.

During this 50th Anniversary year, we are still feeling the glow of our immensely successful Kent Island Day in May and look forward to our big event next year celebrating America's 250th. We appreciate the opportunity to open our sites each month to welcome visitors from near and far and share our stories. We constantly look for opportunities to build relationships. In May and June, we partnered with the Kent Island Federation of Arts

(Continued on page 2)

(KIFA) in two art contests celebrating Kent Island's heritage and recognizing our 50th Anniversary. Joan Stoer, KIHS Board Member, and I were judges. We were presented with one of the winning entries for display in our new Heritage Center, an iconic osprey picture by Dale Hall. What an experience! Joan will again judge an upcoming contest highlighting "Kent Island before the Bridge". We value our growing relationship with KIFA. We are also directly involved with the Historic Stevensville Arts and Entertainment District, and in addition to our Historic Sites in Stevensville, we work with our local businesses to strengthen the vitality and success of Historic Stevensville. We appreciate the tremendous support we are receiving from the Queen Anne's County Economic and Tourism

Thank You
Business Supporters

Chesapeake Light Tackle
Harris Marine Financing
Kent Island Learning Cooperative
Kentmoor Marina Properties (Life)
Kentmoor Restaurant
Lundberg Builders
Maryland CPR and Safety
Michael Rosendale Realty
The Grooming Place

Welcome
New Members

Olga Masciarelli
Janine and Carlos Rodriguez
Trish Underland

Development Office through the efforts of our new Historic Tourism Coordinator, Penny Young-Carrisquillo. Penny also coordinates the activities of the County-wide Historic Sites Consortium, in which we play an active role. This support is providing new outreach and advertising efforts, both in the form of social media publicity and hard copy brochures and flyers. A welcome addition to our efforts.

As an important part of opening and showing our Historic Sites, First Saturdays from April through November, we are working to expand our Docent Program. Hanna Wall, our Docent Coordinator, has developed a Docent Training Program to build our cadre of welcoming docent hosts for visitors at our sites. One session was held last spring, another is scheduled for Saturday, September 13. Check out our announcement here in this Newsletter and on our website. We encourage our members to consider becoming a docent for a fascinating experience. We also have several new, exciting developments to share. As mentioned in our last Newsletter, we have been invited to participate this fall in the Institute for Adult Learning (IAL), an educational organization based in Centreville. We will be presenting 3 separate classes in November at the Kennard Heritage Center on several aspects of our fascinating Kent Island History. Then in December we will host an on-site tour of our Kent Island Heritage Sites. It's a great outreach opportunity to share our heritage and build new relationships and possible memberships. And speaking of a great opportunity, we are excited to share that we've been invited by the Kent Island High School Principal, Dan Harding, to develop a new mutual partnership between the High School and the Heritage Society. We anticipate possible programs with students being involved in our heritage efforts and earning community service credits in a myriad of ways. We anticipate working with teachers and staff to help infuse Kent Island history and heritage in a variety of subjects. It's just the beginning of exploring a variety of ideas on developing this new partnership. We'll meet further with staff and faculty in October to further flesh out ideas and activities for the coming year and beyond. Talk about exciting!

A landmark event this fall, during our 50th Anniversary year, is the opening of our new Kent Island Heritage Center, at 310 Love Point Road in Historic Stevensville, in the 1870 building that was once the first School House in Stevensville. Our new Heritage Center and Museum was made possible by the generous gift of our former Treasurer, Lynne Riley-Coleman. Our plans for the Center have been challenged by some unexpected repairs and delays in the process of making our 155-year-old historic gem an outstanding and welcoming public venue. Our hope is to be able to open in early October, during the large A&E "Artoberfest" event on October 4. Stay tuned for final announcements in the press and in social media. Also, this fall, as a reminder, we'll have our historic Sites open for visitors during the Artoberfest event and for the Classic Car Show event on Nov. 1. Looking further into December we plan to participate in the Queen Annes Railroad Society's Holiday Train Show again this year. Our plans for our annual Holiday Reception and Elections are being reevaluated, in light of the fact that post-Covid participation has significantly decreased in the past several years. Stay tuned for plans for that event.

Of course, our upcoming early fall event is our annual Fall Heritage Picnic at the Kirwan House and Farm on Sunday, September 28. It's our annual old fashion country family picnic with hayrides, live chickens, fresh pressed apple cider, home-made ice cream, fried chicken, and you name it potluck veggies, desserts, and fixin's that you care to bring – all in the beautiful backyard setting of the Kirwan Place. And the historic Kirwan House will be open for tours. It's a wonderful, well attended event, open to members and guests, in a great historic Kent Island setting. Please see our Fall Picnic announcement in this Newsletter and let us know if you plan to attend.

Meanwhile, thanks for your support and best wishes for a great fall! See ya 'round the Island.

Jack Broderick

KIHS COMING EVENTS

Fall is coming, the weather is getting cooler, and we will be having several additional tours and events. Please share these dates with your friends and family as these events may be fun for all of you:

SATURDAY
SEPT 6
2025

Regular Monthly Opening 12:00 PM - 4:00 PM
We have invited people who might be interested in seeing the Sites and Becoming Docents.

SATURDAY
SEPT 13
2025

10:00 AM - 12:00 PM
Kent Island Library Room 133
Training/review Session. So please attend.

SATURDAY
SEPT 20
2025

A group of 7th Day Adventists will be touring Christ Church, and downtown Stevensville Sites.

SUNDAY
SEPT 28
2025

Annual Membership Picnic at Kirwan Museum
1 p.m.

SATURDAY
OCT 4
2025

Artoberfest in downtown Stevensville.
Our sites will be open 12:00 PM - 4:00 PM with hopefully a large crowd attending.

SATURDAY
NOV 1
2025

Our sites will be open along with an Antique Car Show in Historic Stevensville. This should be a lot of fun.

WEDNESDAY
DEC 3
2025

1:00 PM - 4:00 PM A class of about 25 Adults from the Institute for Adult Learning in Centreville will be touring our Historic Sites and this may be a recruiting opportunity for new KIHS Members and Docents.

DEC
DATE TBD
2025

Check the KIHS Website
Annual Membership Meeting

50th
Anniversary Gift
To The Kent Island
Heritage Society
From Kifa

On August 9, 2025, in recognition of the Kent Island Heritage Society's 50th Anniversary, KIFA's Co-President Rebecca Placek presented a photo to Jack Broderick, President of the Kent Island Heritage Society. The photo is "Homecoming" by Dale Hall and it shows an osprey returning to its nest.



Heritage Center's new museum, at 310 Love Point Road in Historic Stevensville, is scheduled to open later this year. Jack and KIHS Board Member Joan Stoer served as judges in KIFA Art Shows and KIHS Board Member John Conley will make a presentation on Kent Island History at KIFA's building at 2 p.m. on September 21.



**Stevensville will host the
ANNUAL HISTORIC AND
SPECIALTY VEHICLES
CAR FESTIVAL**
9 a.m. to 3:15 p.m.
**SATURDAY
NOVEMBER 1ST**

The popular event will include food trucks, vendors, and entertainment. Kent Island Heritage Society sites will be open in Stevensville and the Kirwan Museum in Chester.

**For information, contact
Paul Placek at
pjplacek@verizon.net.**



IT'S TIME AGAIN FOR AN OLD-FASHIONED PICNIC

Join Kent Island Heritage Society
Members and Guests

**The Kirwan House and Farm
SUNDAY SEPTEMBER 28, 2025
1:00 – 5:00 p.m.**

Please Bring A Covered Dish and Lawn Chairs for comfort

KIHS Will Provide
Fried Chicken, Hot Dogs, Iced Tea, Lemonade, Coffee
And HOME-MADE ICE CREAM!!!

Join us for Games, Conversation and Displays



PLEASE RESPOND BY SEPTEMBER 19

PROVIDE RESPONSE WITH INFORMATION BELOW
by Email to kentislandheritagesociety@gmail.com
or mail to KIHS P.O. Box 321, Stevensville MD 21666

Names of Adults (for badges):

Names and ages of children (for game planning):

Phone number and email in case of inclement weather:

Bay Bridge Opening in 1952 Led to Area Motel Boom

By John L. Conley
with postcards from his collection

The opening of the first Bay Bridge in 1952 resulted not just in more vehicles and passengers crossing Kent Island, it also added many new places for travelers to eat dinner and spend the night. At least ten motels were built to serve the motoring public taking advantage of a new way to transit the East Coast, but also to hunting and fishing parties who might spend several days and dollars in the area. Free postcards, matchbooks, and other items were offered to guests as promotional items.

Many of the motels changed names and owners over the years. Most of the motels were independently owned and operated. Two of the motels were in Stevensville, the Kent Motel near today's Park and Ride near Target and the Islander near today's Dunkin' Donuts and Hardees. The remainder were in Grasonville which today is home to several chain motels. On Kent Island, the upscale Inn at Chesapeake Bay Beach Club and Kent Island Resort are just off Route 8 on Kent Island.



Information on the **KENT MOTEL** which was located in Stevensville near today's Park and Ride off Route 8 stated that it was "just 210 miles South of New York City" at a "Quiet Off Highway Location" with a spacious lawn that helped in "Eliminating Traffic Noises." In July 1965, the restaurant

hosted "28 International beauties" enroute to the Miss Universe Beauty Pageant in Miami Beach. (Apasra Hongsakula of Thailand was named Miss Universe that year.) The stop was sponsored by the Route 301 Association which was formed to promote travel along the route. Owners identified on the cards were listed as Cliff and Maxine Maier and Janet and Walter Roman as hosts. An early Kent Motel owner was Janet Breeding Yost. Local residents posed for postcards.

IT'S TRAVEL AND VACATION FUN-TIME!

Queen Anne's County Motels Welcome Your Visit
PLEASE DRIVE SAFELY — WE'LL WAIT UP LATE

<p>BAY BRIDGE MOTEL AND RESTAURANT RTS. 30-301 — GRASONVILLE, MD. AAA Recommended</p> <p>Enjoy the quiet . . . spacious . . . and acres of lawn directly on the water. You'll find dining and true relaxation just 7 miles east of the Bay Bridge.</p> <p>Bay Bridge Motel and Restaurant RTS. 50-301 — GRASONVILLE, MD. 827-7511</p>	<p>CHESTER MOTEL RT. 231 — 13 MILES N. OF CENTREVILLE</p> <p>Renodeled and redecorated just in time to make your stay a pleasant one. Clean, quiet and comfortably air conditioned with television and telephone in every room.</p> <p>Special reduced rates for weekend visitors Your host, Mrs. Dynes Chester Motel 778-2735 RT. 213 — 13 MILES N. OF CENTREVILLE</p>
<p>HOLIDAY MOTEL RTS. 50-301 — GRASONVILLE, MD.</p> <p>Beautifully landscaped and a real haven for the weary traveler who desires comfort and undisturbed rest. Air conditioned and clean beyond compare. Located in the heart of the "Bay Country"</p> <p>Holiday Motel RTS. 50-301 — GRASONVILLE, MD. 827-1921</p>	<p>TOTOA'S MOTEL RTS. 50-301 — GRASONVILLE, MD. ALL ARE WELCOME</p> <p>Just like home atmosphere! Six vent glide air-cooled rooms for summer relaxation. Good food served. Come Visit Us! Totoa's Motel RTS. 50-301 — GRASONVILLE, MD. 827-7921</p>

THE ISLANDER MOTEL was located near today's Dunkin Donuts and Hardees in the Kent Island Shopping Center. The motel originally was part of the Tourinns Motor Court chain that had similar building styles in Wilmington DE, Kiptopeke Beach VA, Allentown and Pittsburgh PA, and Fort Wayne IN. The motel closed for a period in the 1960s and its return was announced in the 1967 Bay Times advertisement. Motels used postcards and matchbooks in promotion to the motoring public.



**THE NEWLY — OPENED
Islander Inn, Motel and Lounge
WELCOMES YOU**

You will find there has been many changes for your comfort and enjoyment at the newly-decorated and re-equipped Islander Motel, Lounge and Restaurant, located on Route 201 and 50 at the Kent Island Shopping Center.

We will feature our famous Chesapeake Bay Steamed in the tastefully decorated restaurant, along with prime Western Beef and Foreign Cuisine. We know you will be happy with the usual Colonial atmosphere accorded in the Islander Inn.

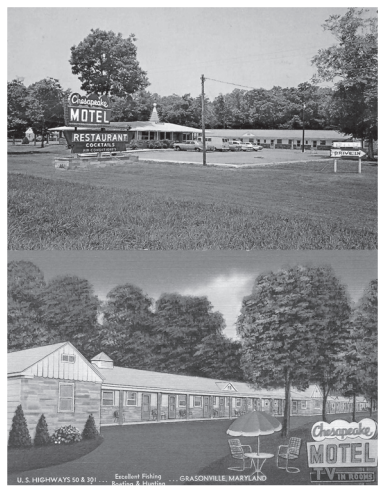
Our dining room will be open from 9 a.m. to 9 p.m. seven days a week. The "Hunt Room," our intimate cocktail lounge, will be serving dinner and your favorite beverages until 12 midnight daily.

**Now Under The Management of
Marion and Ruth Quimby**

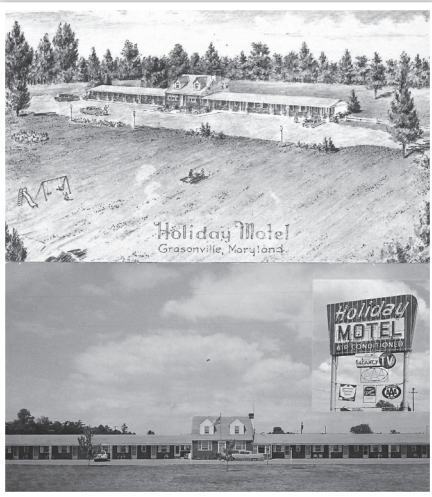
OUR MOTEL
Visit our 50-unit Motel which has been completely redecorated and beautifully equipped with Colonial furnishings. Air conditioning and television in each room. Moderate rates.

THE HUNT ROOM
Open 'til 12 Every Night for Dining and Cocktails.
Every Friday & Saturday — Entertainment and Dancing!

The **CHESAPEAKE MOTEL** was located at the site of today's Wawa store in Grasonville and featured "wall-to-wall carpeting, safe central heating, cross ventilation and healthful Artesian well water." The motel and restaurant operated by Mr. and Mrs. James Millner and Son served "The Shore's Finest Seafood, Steaks, and Chops, as well as cocktails. An item in the April 13, 1972 Bay Times reported that the motel was redecorated by expert decorators.

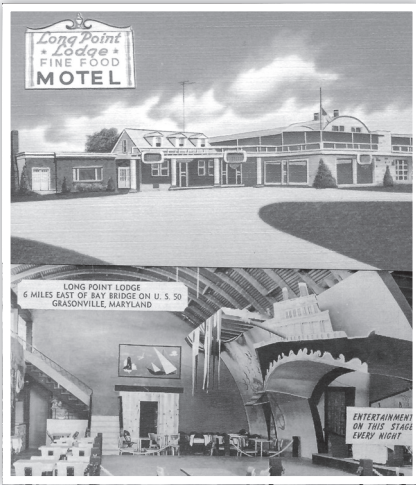


far as Maryland at 5:45 p.m. Will write you a letter when we get to Florida." The motel was operated by William and Margaret Perry. Mrs. Perry was part of a local group of businesses that complained in a 1958 Salisbury Times article that were "dying a slow death" due to high tolls at the bridge and inadequate advertising of the Bay Bridge route. One challenge was the new Baltimore Harbor Tunnel which opened in 1957. The toll for the tunnel was 40 cents per car while the Bay Bridge charged \$1.25 for a car and driver and \$1.50 if there were passengers.

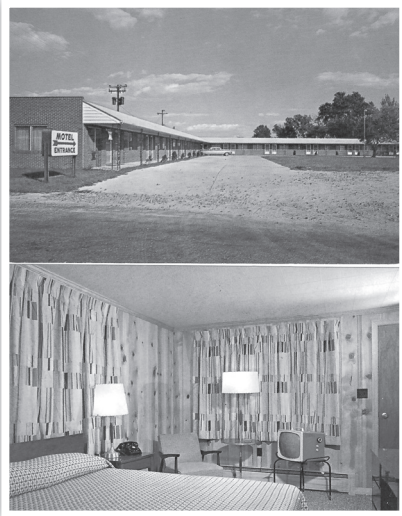


The **HOLIDAY MOTEL** was located at the site of today's Quality Inn in front of Veterans of Foreign Wars building in Grasonville. Guy and Ethel Neudecker operated the hotel which advertised its Triple AAA, Diner's Club membership

and selection for Duncan Hines Travel Book status in 1962. It offered a "Comfortable Night on Routes 50 & 301" on its postcards.



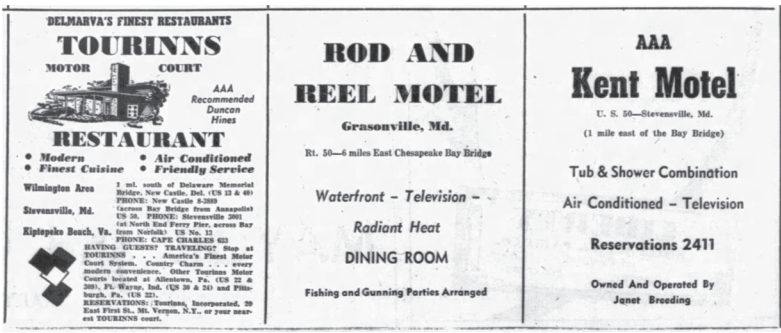
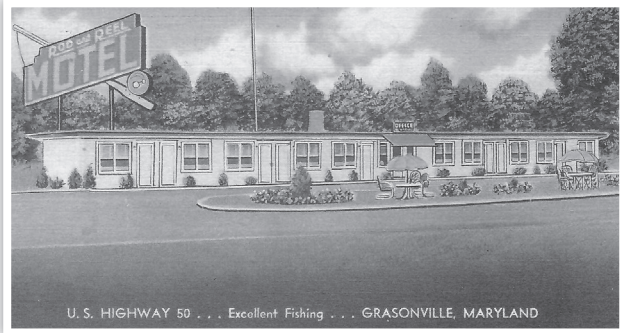
"If the walls could talk" at the **LONG POINT LODGE**, there would likely be some interesting stories about "The Eastern Shore's Finest Club." After a cup of "famous Maryland Crab Soup," guests at the "Eastern Shore's Finest Club" "could enjoy Entertainment



HOLLY'S HOTEL in Grasonville on the site of today's Royal Farms was constructed in 1958 and included 22 units and a restaurant located in the heart of excellent hunting and fishing grounds. Weather Air conditioning was provided by Frigidaire. Many hunters and fishing parties started their day in the 24-hour

service restaurant which opened in 1955 and featured pancake breakfasts and later in the day legendary fried chicken. To the chagrin of many, Holly's closed in 2014.

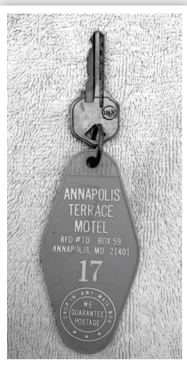
This postcard of the **ROD AND REEL MOTEL** was mailed in 1956. The message on the reverse of this card sent to Massachusetts illustrates that the area motels in the Bay Bridge area were convenient stopping points. "Dear Katherine: Have gotten as



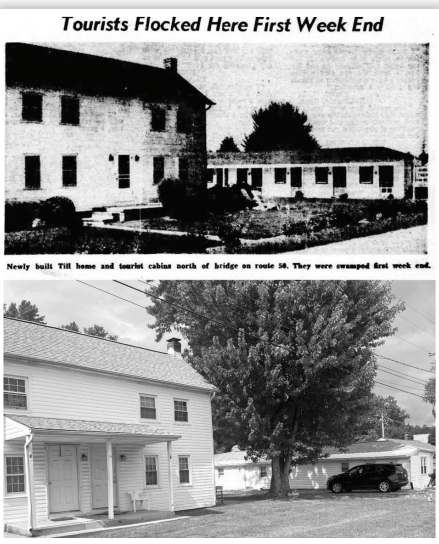
nitely with floor shows from New York at the self-described Gateway to the Eastern Shore. It opened in 1951 and had more than one visit from local law enforcement for issues involving liquor, gambling and "inappropriate" shows. Over time it operated under other owners and names including as Scot Point Lodge when the restaurant and dance hall were destroyed by fire in 1956. The motel being built nearby suffered only minor damage.

The opening of the first Bay Bridge in 1952 resulted in a motel and travel services boom on both sides of the bridge. Barbara, the sender

of this postcard of **ANNAPOLIS TERRACE MOTEL** on U.S. Highway 50 to Damariscotta, Maine, said they had driven 370 miles in December 1958 and that traffic and been very light. The motel had 54 rooms on the "shortest North/South Route" and that the Captain's Table Restaurant and bar were the "Home of Fine Food." L. E Shockley managed the property.



TOTOA'S MOTEL AND RESTAURANT opened in 1952 and featured modern cabins in what was referred to as a tourist camp. The pictures here feature one included in the August 1952 Afro Magazine and one taken in August of this year. It is the only one of the ten 1950s motel buildings still standing, now as apartments at 325 Winchester Road in Grasonville. The motel was opened



by Mrs. Frances Till and her daughter Totoa who the article said used the stage name Totoa Ellington and was "an interpretive dancer who worked in many of the leading nightclubs along the Eastern seaboard."

The facility was listed in the Afro Travel Guide which was like The Negro Motorist Green Book which provided information on motels and other services available to motoring African Americans during the Jim Crow Era.

In the article in the August 1952 Afro Magazine, Frances Till is quoted: "On the day the bridge was dedicated, we had so many requests for food and lodging that we were swamped. Shortly after nightfall, we had to turn guests away. You would be surprised at how many white couple drive ups we had staying in our cabins. You see, we don't have a sign outside saying it is for colored people. I know we are in America and when a white couple drives up and I have a vacancy, I accept them as guests. I don't intend to discontinue this practice either."



Tourists in the Kent Island and Grasonville motels were sure to enjoy a good meal at the original **FISHERMAN'S INN** at Kent Narrows which traced its roots back to the early 1930s. The second floor was added in 1939, and the screened porch was added after the Bay Bridge was built. Today's restaurant was built nearby to replace the original.



Quick Response (QR) Code

SCAN KIHS QUICK RESPONSE (QR) CODE TO REACH OUR WEBSITE

You can reach our Kent Island Heritage Society website with most Smartphones which are equipped with QR Code readers in their cameras. Hold your Smartphone camera over the QR Code so that it is clearly on the phone screen. The phone will scan the code and connect to the site. Some phones might require you to take a picture of the QR Code.



KENT ISLAND HERITAGE SOCIETY, INC.

POST OFFICE BOX 321

STEVENSVILLE, MARYLAND 21666

NONPROFIT ORG
US POSTAGE PAID
EASTON, MD
PERMIT NO. 46

ADDRESS SERVICE REQUESTED



POSTCARD from Kent Island: Spend the Night; Free TV

From John L. Conley Collection

The opening of the first Chesapeake Bay Bridge in 1952 resulted in the construction of at least ten motels on Kent Island and in Grasonville during the 1950s and to the growth of local restaurants. The areas around both sides of the new Bay Bridge proved to be a frequent stopping point destination for travelers transiting the East Coast. Reservations at the Triple AAA Kent Motel in Stevensville could be made at Telephone 2411. Guests would enjoy tiled baths and shower combinations and hot water heat. Seven miles east of the Bay Bridge, guests could stay at the Bay Bridge Motel and Restaurant in Grasonville at the "Center of Maryland's Best Fishing and Hunting Grounds." Read more about most of the early motels in this issue.



LET US HEAR FROM YOU!!!! Please contact KIHS if you have comments on items in [Isle of Kent 1631](#) or if you have questions about Kent Island history that we can try to answer. We welcome topics you would find of interest and especially information you can provide for future issues. Contact: John Conley: jconcomm@gmail.com | cell: 703-216-0449