

# Isle of Kent - 1631

To Discover, Identify, Restore and Preserve the Heritage of Kent Island

NEWSLETTER OF THE KENT ISLAND HERITAGE SOCIETY, INC.

SPRING 2023

## Officers

### PRESIDENT

Jack E. Broderick

### VICE PRESIDENT

Robert Lowe

### RECORDING

SECRETARY

John Conley

### CORRESPONDING SECRETARY

Carole P. Frederick

### TREASURER

Linda Moore

### DIRECTORS

Donna Brown

Linda Collier

Lou Crouch

Kristin Bombard-Green

Erika Kriegisch

Chip Price

Annie Mae Price

Mike Rosendale

Harrison Van Waes

### PAST PRESIDENTS

Marian Steuart 75-77

Gordon Seward 77-79

Julius Grollman 79-81

Mary White 81-82

Walter T. Denny 83-84

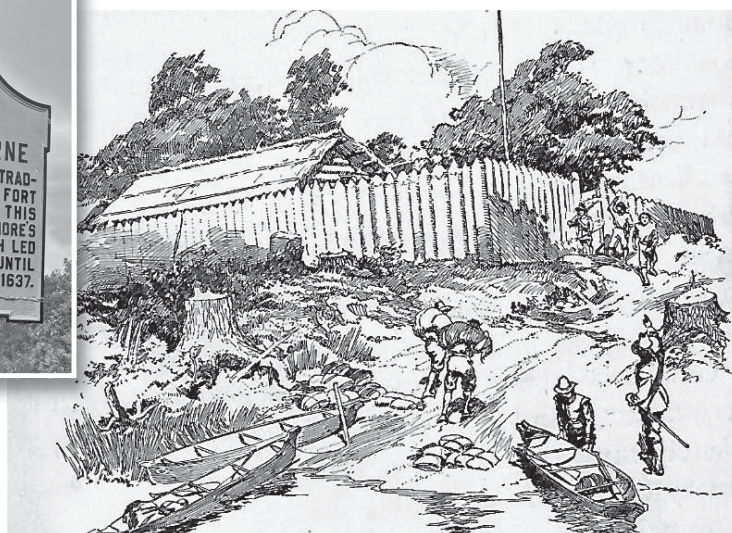
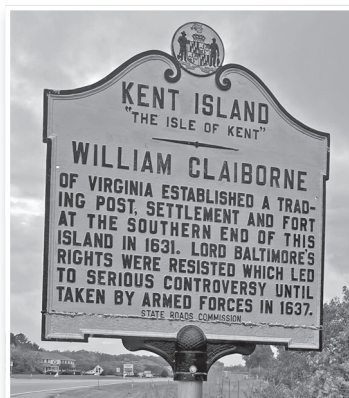
Eva C. White 85-86

C. Gilbert Dunn 87-89

Audrey Hawkins 90-92

Charles Koegel 93-94

Hugo Gemignani 95-98



"The Search for William Claiborne's Forts: Reconstructing the 17th-century Landscape of Kent

Island" will be the topic of a presentation on March 21 by Dr. Matthew McKnight, Chief Archeologist for the State of Maryland. The event sponsored by the Kent Island Heritage Society will be held at the Historic Christ Church in Stevensville at 7 p.m. and is open to the public. Dr. McKnight made a detailed presentation to the Claiborne Society which visited Kent Island in 2022, and KIHS members at that event invited him to make the presentation to our community. He has researched and written about Kent Island sites and history.

## EXPLORING WILLIAM CLAIBORNE'S KENT ISLAND



## President's Message

As we write this Newsletter, the calendar says that Spring is right around the corner, but we're still waiting for winter! It's been an unusual start to what we hope will be a great year. As we closed out 2022, we gathered for our Holiday Brunch and Annual Elections at the beautiful Cascia Vineyard Tasting Room. We enjoyed the wonderful buffet prepared by Chesapeake Celebrations and enjoyed each other's company while recapping our year and sharing the future. Of course, Nancy Cook led an exuberant round of holiday songs! Most importantly we elected and swore in our three new Members of the Board of Directors: Donna Brown, Erika Kriegisch, and Harrison Van Waes. Each brings a special set of experience, talents, and abilities to enhance our heritage mission.

(Continued on page 2)

## **KIHS Committees**

### **Membership**

John Conley, *Chair*

### **Budget**

Bob Lowe, *Chair*  
Linda Collier  
Linda Moore

### **Library/Genealogy**

Bob Lowe, *Chair*  
Lou Crouch  
Annie May Price

### **Newsletter**

John Conley, *Editor*  
Carole Frederick

### **Docents**

### **Bank**

Jack Broderick

### **Post Office**

Tom Tate

### **Train Station**

Chris Kilian  
John Conley

### **Cray House**

Carol Mylander

### **Historic Christ Church**

Nancy Cook

### **Kirwan House**

Linda Collier  
Renee Dye  
Curtis Chance

However, sadly, two of our Board Members will be stepping down. Nancy Cook, our long serving Director, who previously held the offices of President, Vice President, Secretary, Kent Island Day Chair, and “you name it” will become a Director Emeritus. Nancy plans to focus her energies on leading the effort to preserve Historic Christ Church in Stevensville and follow her life’s passion of music, as the new Chorale Director of St. Paul’s Church in Centreville. Nancy will continue to coordinate our scholarship program and offer her advice and assistance. We are also sorry to learn that Vernetta Sherman will be unable to continue to serve as a Board Member, due to recent changes in her life. We value Vernetta’s unique insight and experience and look forward to her continued involvement as a volunteer Society Member, especially at Kent Island Day.

We shared the successes of the past year in our last Newsletter and look forward to an even better year. There are several great recent events we want to highlight. Following our railroading display at the Holiday Train Show at Kent Narrows in early December, we were contacted by the young MacLeay family who were so impressed with our efforts to celebrate the railroad history of Kent Island that they offered a generous gift of \$10,000 to support the restoration of our Stevensville Train Station and Caboose. What a wonderful and thoughtful gift from Ashley and Geoffrey MacLeay, our newest Life Members, Thank You! Enjoy the article and pictures in this issue. We are happy to report that we have a local contractor lined up (L&J Construction) and work has begun on the Train Station.

We also gathered recently with our new owner and heritage partner of the Historic Stevensville Bank, Bill Hufnell, and Chamber of Commerce representatives for the official Ribbon Cutting Ceremony at the Bank. The 1909 bank building has been beautifully restored and Bill’s company, Bay Point Wealth, is operating a modern Financial Planning business in the back “Board Room”. The Heritage Society will continue using and showing the preserved front section, including the iconic triple vault, as a historic site. It was the first bank to open and operate on Kent Island over a century ago. It’s a great partnership and an impressive comparison between the old and new ways of financial management. We look forward to a long, successful, symbiotic relationship with Bill Hufnell in the old Bank.

Currently, we are actively engaged in evaluating a historic Kent Island property for a potential future Heritage Society headquarters, research center, and museum, following the wishes of our former Treasurer, Lynne Riley Coleman. Lynne bequeathed to us a sizable financial gift for such an endeavor. We will also pursue a partnership with Washington College for archaeological research on the Kirwan Farm to locate a rumored unmarked African American cemetery.

An important part of our heritage mission is sharing the stories of our fascinating history with visitors to our sites and by “taking our show on the road” so to speak. We had many great experiences this past year and anticipate many similar experiences during this year. One such recent visit bears mentioning. Referred by our QA Tourism Office in early January, we hosted an enthusiastic visit by young student athletes and their families here for a basketball game with Kent Island High School. Enjoy the pictures of our visitors from St. George High School in Middletown, DE, at the Kirwan House and Store.

Due to our active social media presence, guided by our VP Bob Lowe, we continue to have a growing number of on-line inquires about Kent Island families, ancestry, and locations from a wide variety of folks. Thanks as always to our on-Board research team of Lou Crouch, Annie Mae Price, Linda Collier, and Bob Lowe who continue to be immensely helpful in these inquiries.

Our plans for this year also include strengthening our relationship with our partners in the Historic Stevensville Arts and Entertainment District. We hope to expand our First Saturday activities at our open historic sites to include music, art, and other events, and to expand our docent team.

We will hold our iconic Kent Island Day on Saturday, May 20, in Historic Stevensville with the big KI Day Parade, on-stage entertainment, great local food and over 100 vendors and exhibitors. This year we are using the services of an event planner and building a larger team of local volunteers to help plan and organize our popular and growing community event. We will also hold a fascinating presentation at our March general meeting. On Tuesday, 21 March, at Historic Christ Church in Stevensville, Dr. Matt McKnight, Chief Archaeologist at the Maryland Historical Trust, will share his work and insight on William Claiborne’s founding of Kent Island at Kent Fort in 1631. That’s where it all began! We hope you’ll consider joining us then and at Kent Island Day.

Thanks for your support and best wishes for a great new year. See ya ‘round the Island.

*Jack Broderick*



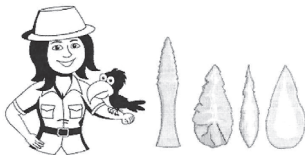
**Opening Ceremonies and Parade at 10:00 a.m.**



CELEBRATING THE FOUNDING  
OF  
KENT ISLAND



# Kent Island Day May 20, 2023



*Come Join the Fun*



*Attention*

*Commercial Groups, Artisans, and Non-Profits  
For exhibitor forms to participate go to our website:  
[www.kentislandheritagesociety.org](http://www.kentislandheritagesociety.org)*



KIHS is very grateful to Geoffrey and Ashley MacLeay and the MacLeay Family Endowment for their donation of \$10,000 to the Kent Island Heritage Society. The money will be used for renovations and repairs to the train station and caboose in Stevensville. Ashley, who was born and raised on Kent Island and is a graduate of Kent Island High School said,

**"Our sons are big train enthusiasts so it's great to see our donation go towards renovations of the train station and caboose."**

"The pocket park has become a Kent Island landmark and we are excited that our children as well as many more generations of Kent Islanders will get to learn about the rich history of the railroad on the eastern shore. We love attending events that the Kent Island Heritage Society hosts, and our family looks forward to participating in many more future activities."

*The MacLeay's joined KIHS President Jack Broderick for the donation with their sons Michael and William at the train station.  
They expect a new son to join the crew in May.*



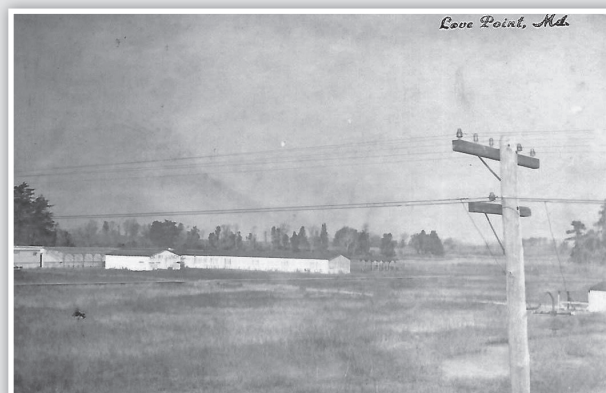
## THE HISTORIC BANK IN STEVENSVILLE IS THE NEW HOME OF BAY POINT WEALTH.

Owner and lifetime KIHS member Bill Hufnell has agreed to permit KIHS to continue to use the bank for historic tours and events, and has already made improvements to the property.

*Pictured at the ribbon cutting are ( from left): Chris Hufnell, Bill Hufnell, Senator James E. Kirwan (aka John Conley,) KI Colonial Boy (Jack Broderick), Brad Lundberg (KI Rotary Club), and Linda Friday (QAC Chamber of Commerce).*



**MYSTERY SOLVED!!!**



WE RAN THIS POSTCARD IN THE SUMMER 2020 ISLE OF KENT-1631 AND ASKED IF ANYONE COULD IDENTIFY THE BUILDINGS ON THE CARD WHICH WAS MAILED IN 1921.

KIHS BOARD MEMBER MIKE ROSENDALE HAS DETERMINED THAT THE CARD IS OF SOME OF THE OUT BUILDINGS AT THE LOVE POINT HOTEL. ONE OF THE BUILDINGS HAS SIGNS READING "DAIRY" AND "LUNCH." THE GROUNDS FEATURED AN AMUSEMENT PARK WITH A MERRY-GO-ROUND, A DANCE HALL, AND OTHER ENTERTAINMENT VENUES.

THANKS, INSPECTOR MIKE.

## KIHS WAS PLEASED TO HOST THE 9TH GRADE BASKETBALL TEAM FROM ST. GEORGE'S TECHNICAL HIGH SCHOOL IN MIDDLETON, DELAWARE IN JANUARY.

The team was here to play the Kent Island High School team and its coach George White wanted the team to visit a historic museum or site during the trip. Linda Collier and John Conley gave a tour of the country store, Kirwan House, and grounds. The students and their parents and coaches found materials in the store of real interest and asked many questions. We later learned the coach was requiring players to write an essay about the visit. KIHS welcomes the opportunity to share history with students.





# The Longest Serving Eatery Location on Today's Kent Island

by Louis S. Crouch Jr.

Kent Island, as it approaches the four century mark since first settled by English colonists, has had its share of establishments serving prepared food. The kinds of eateries range from an ordinary (tavern or inn) in the earliest times to all imaginable types today.

The first and longest lived town on Kent Island was Broad Creek which existed from approximately 1650 until 1860. The site was selected based in part on the natural harbor formed at the mouth of the creek it was named for. A tavern owned by Anthony Workman was thought to be located there as early as 1686 (*Queen Anne's County Maryland- Its Early History and Development*, F. Emory, Queen Anne Press Reprinted 1981). The capital of Maryland was moved from St. Mary's City to Annapolis by 1695 and the ferry service established between there and Broad Creek contributed to the vitality of the soon to be busy port town. Taverns and inns at Broad Creek are subsequently mentioned in *The Maryland Gazette* associated with the referenced owners in 1747 (Nicholas Cloud), 1748 (James Hutchins), 1767 (John Bryan), 1815 (Isaac Parker) and 1819 (Nathaniel Covington) and undoubtedly existed later. The Annapolis-Broad Creek Ferry operated at least until 1858 (see Emory above) but subsequently the ferry service was discontinued, the harbor silted in and Broad Creek began declining not long afterwards. Stevensville, beginning around 1860, replaced it as a commercial center, not in small part due to the establishment of landings on the Chester River for freight and passenger boat service at the north end of Kent Island and finally the extension of railroad service to Love Point from the mainland Eastern Shore during the late 1800s and early 1900s. Detailed documentation of the eateries in Broad Creek in order to determine which individual tavern or inn may have served the public the longest was not found and all were gone long ago but collectively they amount to about 2 centuries.

One of the earliest eateries in Stevensville may have started with the boarding house built for John Reuben Jeffers in 1860 (Lowery's Hotel Maryland Historic Trust QA-463). In the 1870 census J.R. Jeffers' occupation is listed as constable and is apparently somewhat wealthy. William H Jeffers is listed in J.R. Jeffers's household as being in the restaurant profession. J.R. Reubens later rented, then sold the boarding house to the Lowery family who maintained it as a hotel well into the first half of the 20th century until it was sold and converted to a private home as it remains today.

The longest serving eatery location on Kent Island still cooking today, albeit with some name changes, is most likely the Rams Head Shore House at 800 Main Street in Stevensville. The Rams Head location began as a filling station built by Luther Baxter

in 1926 according to property records which early on was called the Silver Roof. Mr. Baxter (Fig. 1) is a descendant of the earliest Kent Island settlers. He was a carpenter, residing in Stevensville his whole life, and at least two houses built by Mr. Baxter are in the Stevensville Historical District today. The lifeblood of the Broad Creek eateries resulted in part from ferries, and perhaps the construction of Mr. Baxter's filling station did as well. It may have been in anticipation of the establishment of ferry service between Matapeake and Annapolis in 1930 and the expected large increase in vehicle traffic through Stevensville, the only route from the ferry to the Kent Narrows bridge. It was not found exactly when after the filling station was completed that it was named the Silver Roof or began serving food. Property records refer to it as "*The Filling Station Property of Luther Baxter*". The US census of April 1930 for Mr. Baxter's Stevensville household lists him as a house carpenter and his daughter Florence as a garage sales lady so it is not apparent that food was being served at the time of the census. Interestingly, Luther Baxter obtained a mortgage through E.S. Adkins, a local building supplies company, on 10 Feb 1931 according to property records. This gives a possible date as to when afterwards a food service addition was constructed. The Silver Roof was sold to Martin Rappold in November 1933 according to property records, and certainly it was no coincidence that prohibition ended in December of that year. An article in the 17 May 1934 Queen Anne Record establishes that it was before 1934 the Silver Roof food service began: "*On the same highway but nearer the Stevensville High School, Martin P. Rappold, of Philadelphia, is rebuilding the Silver Roof restaurant and filling station in preparation for the summer trade.*"

It is reasonably concluded that the Silver Roof eatery, as its current Rams Head Shore House incarnation, began as early as 1931 and probably no later than 1933. On a metallurgical note, it was reported in the 12 May 1936 Queen Anne Record that a thirsty patron once spent all his money on drinks. He then proceeded to tear off a piece of the roof and offered to pay for more saying the roof was advertised as silver but actually proved to be paint on aluminum.

The Silver Roof and its several iterations survived the Great Depression, hurricanes, and, unlike the cessation of ferry service at the Broad Creek eateries, the demise of the Matapeake ferry on July 30, 1952. This is the date the Bay Bridge opened, the Matapeake ferry ceased and on-off island traffic formerly passing through Stevensville bypassed it on the new Route 50 highway. Property records and local news articles afford the following timeline



Figure 1 Luther Baxter (L) "*A Walk Back in Time*" W.N. Hoxter Jr MRH Publishing (1997)

(Continued on page 6)

from Silver Roof to Rams Head regarding name changes and owners: 1926-1933 (Baxter filling station/Silver Roof, Luther Baxter); 1933-1939 (Silver Roof, Martin Rappold); 1939-1945 (Island Casino, Joseph Evans); 1945-1950 (Island Casino, J. Walter Crouch); 1950-1965 (Island Casino, Henry Lane); 1965-1973 (Island Inn, Henry Lane); 1973-1981 (Island Inn/Silver Dollar, John and Essie Lawhorne); 1981-1984 (Silver Dollar, Gary Prospero/Jack Dutrow); 1984-1985 (Island Inn, William Cantler); 1985-2006 (Verna's Island Inn, Verna and Sonny Rosenberry); and 2006 to present (Rams Head, J&B Property Holdings). Some of the managers over the earlier years included Morris Dubnow and Ocella and Frank Kerst (1930s), Elizabeth Potts (1940s-50s), Henry Lane (1960s) and Ray and Nancy Meisenholder (1970s).

Aerial photos (Queen Anne's County GIS Historic Image Viewer) of the approximate same area around the Silver Roof (1937), Silver Dollar (1978), Verna's Island Inn (1997) and Rams Head (2019) are shown in **Figures 2-5**. The eatery building in each photo is in the upper left corner just off Route 18 (Main Street), the Stevensville Cemetery is in the center and Cox Creek is to the right with the Cox Creek Bridge evident. In 1937 the absence of Route 50 and the presence of many boats at the long gone Cox Creek landing adjacent to the cemetery are notable. A long roof on the right side of the building could be imagined as silver in the 1937 photo, and the building was little changed by 1978. The Rosenberrys made major structural changes to the 1978 building with the eating area expanded in an infill to the left and adding a wing to the right as seen in 1997. Major damage from Hurricane Isabel in 2003 necessitated a complete restoration of the interior which was completed in 1994. The 2019 Rams Head appears little changed externally from the Rosenberry renovations. So, what began as Mr. Baxter's filling station has been in the same location since 1926, and after expanding to include food service, is apparently the oldest continuously serving eatery location on Kent Island as it approaches its centennial.

Mr. Baxter's business and its successors, after nearly a century of existence almost entirely as a bar/restaurant and social hub, is of course not without some interesting history. Those old enough to have been a patron of the bar/restaurant themselves or heard from their elders (the author's father included) might recount that at times it was considered a "right rough place" in Kent Islandese, fair or not. This reputation changed markedly

for the better when the Rosenberrys acquired the property almost 3 decades ago and subsequently renovated the building substantially, and it continues today with the Rams Head. The Kent Island Heritage Society was very fortunate in 2008 to have received a generous gift of the antique

cash register from the early days of the eatery from Verna Rosenberry. We certainly would like to hear the tales it could tell.

One thread connecting the Rams Head to the earliest times is live music. An early example appeared in an ad for the Silver Roof in the 22 Dec 1936 Queen Annes Record Observer featuring Bill Miller and His Noviliers. A few bands that appeared later were Melvin Johnson and His New Band at the Island Casino in 1939, Lew Starrt and his Merry Music Makers at the Island Casino in 1945, Eddie Cheezum at the Island Inn in 1972, Eddie Walls at the Silver Dollar in

1974, Gunsmoke at the Island Inn in 1984 and Roadhouse at Verna's Island Inn in 1991. The Rams Head Shore House is a premier live music venue for the mid-Eastern Shore and certainly was not topped previously in the last century of providing sounds there.

Sports have been a tradition since the Silver Roof days, continuing today with the sports bar aspect of the Rams Head and over the years with sponsorship of local sports teams and other sports related activities. Morris Dubnow was the very enterprising manager of the Silver Roof in the second half of the 1930s and who had no lack of publicity in the local papers. He may have started the sports tradition and despite his brief tenure almost certainly has not been matched since. The emphasis in the Silver Roof pre-television days was of course live and participatory sports. There was a boxing arena and the 19 November 1936 Queen Anne's Record Observer ad for Friday night fights promised quite a card (**Fig. 7**). Patrons of the time would avail themselves of the ring and in July 1937 Mr. Dubnow himself suffered a broken arm during friendly sparring. Mr. Dubnow was a principal in establishing a new county-wide baseball league. The home field of the Kent Island Blue Jays, for which Mr. Dubnow served as president of the club, was constructed by May 1936 across the road from the Silver Roof on Fountain Jackson's farm. For the record, the first Blue Jays game on their new homefield on 17 May 1936 resulted in an 8-6 loss to Church Hill. Finally, the Silver Roof sponsored a shooting contest on Christmas day 1936 as well as Christmas Eve and New Year's Eve dances (**Fig. 6**). One notable sports-related event occurred in July 1996 when the much beloved Orioles third baseman and Hall of Famer Brooks Robinson paid a visit to a packed Verna's Island Inn.



Figure 7 Queen Annes Record Observer 22 Dec 1936

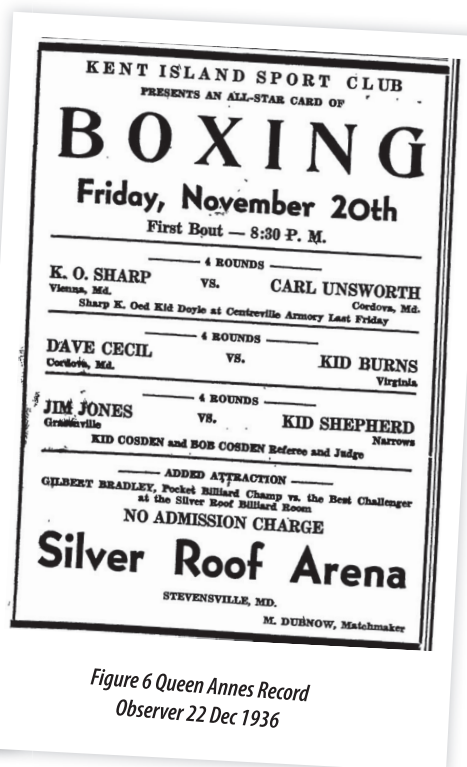


Figure 6 Queen Annes Record Observer 22 Dec 1936



Mr. Baxter's enterprise and its successors, operating in all or part of 10 consecutive decades, has of course been the scene of brushes with the law by the business or its patrons at times but apparently few and far between as reported in local papers. The earliest one found was around October 1937 when manager Morris Dubrow shockingly permitted dancing on a Sunday in the Silver Roof, for which he was convicted of keeping a disorderly house in a jury trial in November 1937 and fined \$100 (about \$2100 today) plus costs. Another incident involved manager Elizabeth Potts of the Island Casino, who was swept up in what was described in the 21 June 1951 Queens Anne's Record Observer as one of the most extensive investigations into gambling in the county history. Nineteen persons were indicted by a grand jury, apparently most for the high rollers gambling on their dime or so slot and pin ball machines sitting in plain view in their businesses. Fortunately, Mrs. Potts' case was dismissed for lack of evidence and escaped the \$100 fine (about \$1100 today).

The succession of eatery businesses at 800 Main Street in Stevensville have consistently engaged the community for special occasions and benefits over the years like the aforementioned visit in 1996 by Brooks Robinson to **Verna's Island Inn**. A few examples from long ago include the following: **The Silver Roof**, in an event hosted by the Kent Island Women's Club at Stevensville High School, sponsored Miss Naomi Palmer in the Shirley

Temple Parade for 2 to 12 year olds and Miss Jeanette Wolf in the beauty contest for 14 to 25 year olds (single or married). **The Island Casino** on 27 May 1947 hosted a dinner for the graduating Stevensville High School class (Colleen Pierson, Ruth Crouch, Betty Thomas, Barbara Hoxter, Norma Horney, Elizabeth Dashiell; Phyllis Davidson, Lorraine Jones, Mary Catherine Bryan, Margaret Coursey, William Cockey, Edwin Horney, Charles Howard Stevens, Roy Eaton and Robert Snyder). **The Island Casino** also held a benefit dance featuring the Washington College Orchestra for the Kent Island Volunteer Fire Company Ladies Auxiliary on 31 May 1947, the KIVFD having just been chartered the previous month. More recently, in 2019 alone the **Rams Head** hosted St. Baldrick's annual fundraiser for children's cancer research in March, the Kent Island Optimist's Club Shop with a Cop benefit in April, and the Historic Stevensville Arts and Entertainment District fundraiser in June. Undoubtedly there has been many more times the Silver Roof and its successors supported the Kent Island community in the last century.

Luther Baxter, born 26 August 1887, passed away on 26 February 1967 and was buried in the Stevensville Cemetery in sight of the original eatery at 800 Main Street as are several other owners or managers mentioned above. We have not forgotten.



Figure 2 Silver Roof Area Stevensville 1937



Figure 3 Silver Dollar Area Stevensville 1978

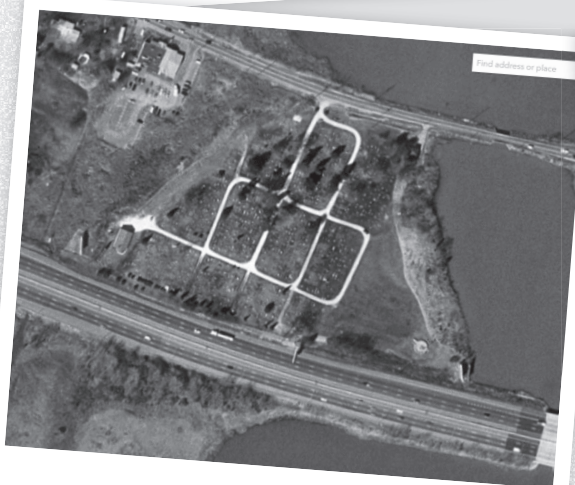


Figure 4 Verna's Island Inn Area Stevensville 1997

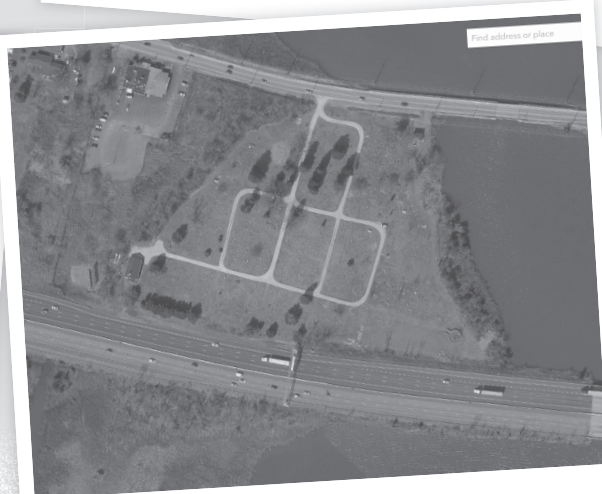


Figure 5 Rams Head Shore House Area Stevensville 2019

# CALL THE KENT ISLAND MIDWIFE

By Linda Collier

A few things have happened lately that prompted me to write an article I've been pondering for some time. Some of our previous articles have referred to this person, a book I recently read referred to this person, a special was aired Christmas night about this person, it is black history month as I write this and also the fact that I recently became a great grandmother for the second time, sealed the deal. That person is the midwife. Considering the role they have played in Kent Island history, they have been sorely overlooked.

Although a hospital has been in Easton since the late 1800s, up until the early 50s, most babies on Kent Island were born at home. Exceptions might have been a birth that was expected to have complications, the mother was of advanced age or was in ill health. Both my brother and I were born at home with the help of Dr. Sattelman and my grandmother.

Thinking back to the time on the island when there were no phones, travel was by horseback or horse and buggy, how did you let the doctor know he was needed and how could he get there when weather was inclement or the doctor was just unavailable? Simple... you called the midwife (or maybe sent someone to fetch her).

It seems that each area on the island had its own beloved lady that knew what to do in case of an unattended birth and was usually present, even if the doctor did make it, to be his aid. She was there for the labor, during the birth and maybe a few weeks after, because women took to their bed for a while after childbirth. If the mother could not nurse the child for some reason, she would find someone who could. These wonderful women were more often than not from the African American communities.

Referring to our newsletter stories about the Hopkins family (2001 and reprinted in 2021) Dorothy begins with:

*"I was born in the family parlor one September morn at 7 a.m. at Great Neck or Hopkins Place, as we called it, on September 25, 1913. I don't know whether Dr. Henry made it on time, but the colored mammy was. We called her Aunt Harriet, and she helped nurse me as well".*

Jimmy Ewing's daughter, Claudia, recalls her father telling her that there was a terrible snowstorm the night he was born so he was delivered by Harriet Stansbury, the colored midwife, who lived around Matapeake. Aunt Harriet, again! I'm sure the title of aunt was a term of endearment. Jimmy was born January 30, 1923. We have heard that she delivered over 100 babies in that area, where the census shows her living most of her life. 1910 census shows she is 45 and has had 8 children of which only two were living. She had never attended

school. Her tombstone was found in a very small cemetery near the present day Matapeake Estates.

Speaking of the census, we found three other women on the island who listed their occupations as midwives, Eliza Weeks, born 1803, Julia Lee, born 1800 and Georgianna Mealey, born 1857. Throughout Queen Anne's County there was Mary Bowser, Lizzie Wilson, Annie Dawkins, Adaline Watkins, Frances Ewing and Jennie Cooper. I'm sure there were many others who served the area. By the 1950 census, no one on the island provided their occupation as midwife.

After Christmas, I started reading Dr. Harry Rhodes' book, A COUNTRY BOY GROWS UP. The first half is dedicated to a young boy's life on the farm. He states that the parlor of his house had been converted to a bedroom and the mid-wife, Tiny Boyles, told us to go in and see our new baby sister. Apparently, it was not uncommon to be born in the parlor turned birthing room. Tiny Boyles also worked for the Kirwans on Kent Island in the capacity of a nurse.

In those days, before ultrasound, in order to discover the baby's gender, one of the older, wiser ladies would put a long piece of thread through a needle or even the mother's wedding ring, and dangle it over the expectant mother's tummy. If it went back and forth, it was boy, in a circle a girl. It had a 50% success rate. More on these very scientific tests in a future issue.

My own mother wrote in her iconic story, My First Ninety Years, (newsletter winter 2001) that her mother had five children, with the help of Georgianna Mealey, the African American midwife from Newtown in Chester. There was no mention of a doctor.

All of the midwives mentioned on Kent Island were African-American and obviously provided a much needed service to their communities. I think the job of the midwife back then was to do whatever needed to be

(Continued next page ►)



*The grave of Kent Island Midwife Harriet Stansbury (nee Dunn) is located near Matapeake.*



done. There were other women who did not necessarily attend the birth, but stayed with the mothers for the duration of their recovery. They took care of the mother, the baby, and some of the household chores if needed. This practice continued into the 1960s and 1970s. My own grandmother, Daisy Thompson Livingston, did this for a while, after her own children were raised.

Others were Ms. Anna Arledge, Evelyn Hampton from Kent Island, Sally Smith from Centreville, and Ms. Edith Baker from Grasonville. Mrs. Baker stayed with me for a week after my daughter was born in 1964. When the umbilical fell off my mother insisted that she burn it so that the child wouldn't grow up to steal. She didn't really believe this stuff, but why take the chance?

So fast forward to 2022 and the birth of my great grand-daughter. My family knows I have always been a fan of Call the Midwife, the BBC television show and how watching the real birth of a baby was #1 on my bucket list. So, on December 29th. I was greatly honored when asked if I wanted to be present for the birth of our beautiful little Pearl Charlotte Sewell and I'll never forget it. Can I add midwife to my resume? I think I would love it. Now on to #2 on my list, finding an arrowhead on the island.



## Do We Have Your Email Address?

To enhance our communications with members on a timely basis, KIHS is expanding our membership email list. This will enable us to more quickly distribute information—such as changes to an event—and other announcements, and for members to communicate with KIHS. Member email addresses will not be shared with any other organizations and can be removed at any time. To receive our email communications, please send your email address to [kentislandheritagesociety.com](mailto:kentislandheritagesociety.com).



## KENT ISLAND HERITAGE SOCIETY SCHOLARSHIP

The Kent Island Heritage Society is offering a \$1000 one-year scholarship to a graduating senior from Kent Island High School who plans to attend college.

### TO BE ELIGIBLE THE APPLICANT MUST:

- Have a 3.0 GPA or higher, and
- Have performed community service.

Please submit for review:

The application form a letter of recommendation from a teacher or guidance counselor accompanied by your high school transcript, and a one page essay on the importance of preserving the heritage of Kent Island (the first paragraph of which should contain a brief biographical sketch.)

## Application Form

*Complete the following and return it with the recommendation, transcript and essay.*

Name \_\_\_\_\_

Address \_\_\_\_\_

Phone \_\_\_\_\_

Brief explanation of Community Service: \_\_\_\_\_

\_\_\_\_\_  
\_\_\_\_\_

All applications must be postmarked no later than **APRIL 1st**. Send to:  
The Kent Island Heritage Society Scholarship Committee  
c/o Mrs. Nancy Cook  
124 Bryce Road, Queenstown. MD 21658



**NEW KIHS BOARD MEMBERS AND OFFICERS WERE SWORN IN** by former County Commissioner and lifetime KIHS member Mark Anderson at the KIHS Membership Luncheon at Cascia Vineyards in December. Pictured from left are Mark Anderson, Jack Broderick, John Conley, Carole Frederick, Annie Mae Price, Lou Crouch, Donna Brown, Harrison Van Waes, and Eric Kriegisch.

## MEET NEW KIHS BOARD MEMBER



### **HARRISON VAN WAES**

currently works as the Director of Collections of the Maryland Center for History and Culture. He is a lifelong

Marylander who grew

up in Gaithersburg and Brookeville in Montgomery County. Harrison received his B.S. in History at Towson University and began his career in museum education at Historic Ships in Baltimore and the Baltimore Museum of Industry. In 2014–2015, he worked as a lead shipwright during the hull restoration project of the USS Constellation (1854). After the project, Harrison transitioned to operations and volunteer management at the B&O Railroad Museum, where he later served as curator from 2016–2019. Since joining the MCHC, he has received his M.A. in Museum Studies through the University of Leicester and is starting his first term as a board member for the Kent Island Heritage Society. Harrison spends his free time cycling all over Kent Island, reenacting the Civil War and World War I, and hanging out with his wife and cats.

## KIHS Gifted Classic Quilt

Kent Island Heritage Society was the lucky recipient of a lovely antique quilt, circa 1850 to 1860s, from the family of Kirby Carville Benton.

Although showing a little wear, the colors are still bright and beautiful and done in a modified lobster claw design. It is all sewn by hand and in some places double stitched, which helped to date it. We can't imagine the time this would have taken to complete. What a lovely addition to our already outstanding quilt collection. We will display it at one of our historic sites.



*Carville Benton and his soon-to-be-wife, Marjorie Buckel.  
The Benton family lived in the Kent Point Area.*





## Thank You Business Supporters

A Little Farm Nursery	Kentmorr Marina
Bay Point Life	Lundberg Builders
Bev's Grooming Service	Michael Rosendale Realty
Four Seasons at Kent Island	The Grooming Place
Harris Marine Financing, Inc	

## Welcome New Members



Gerakd Anders, *Family*  
 Kim Cascia, *Life*  
 Mark Cascia, *Life*  
 James Cameron, *Family*  
 Donald Ferrell, *Life*  
 Tim and Jan Herlighy, *Family*  
 Edward Kampes and Linda Tauber, *Family*  
 George Keen, *Individual*  
 Kimberly Lank, *Life*  
 Geoffrey and Ashley MacLeay, *Life*  
 Michele Nooney, *Family*  
 Michael Morgan, *Individual*  
 Daniel Phelan, *Individual*  
 Elizabeth Richardson, *Individual*  
 Chris Schwink, *Individual*  
 Andrew Webster, *Individual*  
 Sue White-Herchek, *Individual*



Quick Response (QR) Code

### SCAN KIHS QUICK RESPONSE (QR) CODE TO REACH OUR WEBSITE

You can reach our Kent Island Heritage Society website with most Smartphones which are equipped with QR Code readers in their cameras.

Hold your Smartphone camera

over the QR Code so that it is clearly on the phone screen. The phone will scan the code and connect to the site. Some phones might require you to take a picture of the QR Code.

## MEMBERSHIP FORM

Enclosed is a check to cover dues for the membership indicated below:

- |   |          |  |         |
|---|----------|--|---------|
| <input type="checkbox"/> Individual Life Membership | \$250.00 | <input type="checkbox"/> Single Membership | \$15.00 |
| <input type="checkbox"/> Organization Membership    | \$40.00  | <input type="checkbox"/> Family Membership | \$25.00 |
| <input type="checkbox"/> Business Membership        | \$50.00  |  |         |

Name(s) \_\_\_\_\_

Address \_\_\_\_\_

Telephone (Home) \_\_\_\_\_

(Cell) \_\_\_\_\_

Email address \_\_\_\_\_

Your Interests:

History \_\_\_\_\_

Genealogy \_\_\_\_\_

Photography \_\_\_\_\_

Docent Program \_\_\_\_\_

Property Maintenance \_\_\_\_\_

Special Interest \_\_\_\_\_

*Dues and contributions are tax deductible to the fullest extent of the law.*

**Membership period:**  
**January 1 to December 31**

**The Kent Island Heritage Society, Inc**  
**P.O. Box 321**  
**Stevensville, Maryland 21666**  
**[www.kentislandheritagesociety.org](http://www.kentislandheritagesociety.org)**

KENT ISLAND HERITAGE SOCIETY, INC.

POST OFFICE BOX 321

STEVENSVILLE, MARYLAND 21666

NONPROFIT ORG  
US POSTAGE PAID  
EASTON, MD  
PERMIT NO. 46

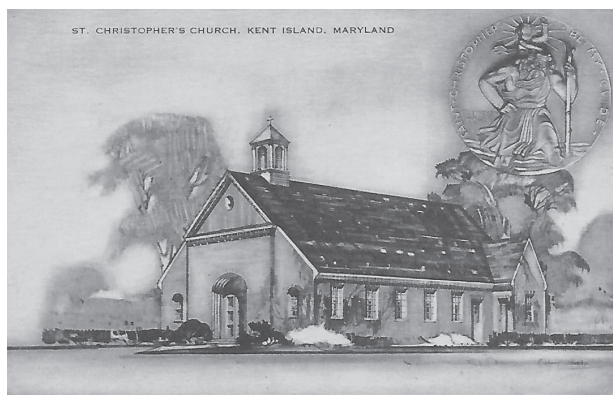
ADDRESS SERVICE REQUESTED



## POSTCARD from Kent Island: Did You Win?

*Submitted by John L. Conley*

St. Christopher's Catholic Church held a raffle in April 1955 for its new church which held its first Mass on October 2, 1955. The church postcard was mailed in 1958. The present church, which was completed in 2009, includes the old sanctuary. According to the church's website [stchristopherski.org](http://stchristopherski.org), the property on which the church was constructed was donated by David Nichols in honor of his mother. The first formal meeting of future parishioners was held at Camp St. Martin at Love Point in October 1952, and the first Mass was said there in September 1953. The camp opened in 1922 and was operated by St. Martin Catholic Church in Baltimore as a "country getaway" for its students. An article on Camp St. Martin appeared in the Fall 2020 issue of *Isle of Kent 1631* which can be found on our website at [kentislandheritagesociety.org](http://kentislandheritagesociety.org).



**LET US HEAR FROM YOU!!!!** Please contact KIHS if you have comments on items in [Isle of Kent 1631](#) or if you have questions about Kent Island history that we can try to answer. We welcome topics you would find of interest and especially information you can provide for future issues. Contact: John Conley: [jconcomm@gmail.com](mailto:jconcomm@gmail.com) | cell: 703-216-0449