

# Isle of Kent - 1631

---

## NEWSLETTER OF THE KENT ISLAND HERITAGE SOCIETY, INC.

---

WINTER 1982

### PRESIDENT'S MESSAGE

Dear Friends:

I am so pleased to be able to communicate with you throughout the year in the pages of this newsletter. We hope you are enjoying the newsletter and will feel free to offer articles and information to be included.

We will be a little more subdued in our efforts this year because, after all, how do you top a 350th Anniversary celebration? However, our Special Events Committee is hard at work planning for a big Kent Island Day on May 29, 1982.

I would like to call your attention to the dedication of Mr. Charlie Roe of Stevensville, in raising and lowering the American flag which was presented to the Heritage Society by the American Legion and is flown from a flag pole on property owned by Julius Grollman in Stevensville. Mr. Roe has faithfully cared for the flag and is to be commended for his loyalty.

The program for our March 19th meeting is one you will not want to miss. It is my understanding that Dr. Mary Matossias, Associate Professor of Psycho-genealogy, University of Maryland brings a very unique approach to genealogical research and I urge you all to attend.

Mary J. White, President

### MILDRED COOK SCHOCH AND MARY JONES WHITE HONORED

At the December 10, 1981 dinner meeting, Mildred Cook Schoch and Mary Jones White were granted honorary life memberships in the Kent Island Heritage Society. Mrs. Schoch received her hand lettered resolution which reads as follows:

#### Honorary Life Membership

Mildred Cook Schoch

Whereas on May 9, 1975, Mildred Cook Schoch was one of the founding members of the Kent Island Heritage Society, and

Whereas she has given tireless and able service to the Kent Island Heritage Society and the people of Kent Island through distinguished research of the old records of Kent Island's land, buildings and people, and

Whereas she provided information, through her research, which was directly responsible for the recognition by the Legislature of the State of Maryland of Kent Island as the site of the first permanent English settlement within the boundaries of Maryland, and

Whereas she documented four other firsts for Kent Island: The First White Woman, The First Church, The First Courthouse, and The First Boat built in Maryland, and

Whereas she researched the historical material used in the pageant, "A Patent for Conflict," be it therefore be

Resolved that the Board of Directors,

by unanimous vote, grants a life membership to Mildred Cook Schoch as an expression of deep gratitude, and be it further resolved that copies of this resolution be spread upon the minutes of the Kent Island Heritage Society and be presented to Mildred Schoch. Dated this tenth day of December, in the year of our Lord, one thousand nine hundred eighty-one, at Kent Island. Henrietta K. Grollman, Secretary and Mary J. White, President.

The Honorary Life Membership for Mary J. White reads as follows: The Kent Island Heritage Society, Inc. in recognition of timeless and able service hereby grants Mary Jones White an Honorary Life Membership dated this tenth day of December, in the year of our Lord, one thousand nine hundred eighty-one at Kent Island. Julius Grollman, Past President, Eva White, Vice-President, Henrietta K. Grollman, Secretary.

#### ISLE OF KENT 1631 NEWSLETTER

The Kent Island Heritage Society's Quarterly Newsletter was mentioned in the newsletter of the Maryland Historical Trust, Swap Some Words About Preservation, December 1981. We note that despite a very rich heritage of early homes, unique traditions, archaeological and other historic sites, Queen Anne's County is not frequently mentioned in the Trust's newsletter. We hope that this will change.

#### DO YOU KNOW SOMETHING ABOUT KENT ISLAND?

Last summer during our birthday celebration the Heritage Museum proved to be one of our most attractive projects. People were reminded of "the old days" and spoke knowingly about them. Why don't we make a special effort to enrich the documentation of our island heritage by recording items of Kent Island memorabilia such as: Tall tales & family yarns

The late "Toots" Baxter had a lovely story about a huge turtle that had washed ashore and was so large that after he had cleaned it, he used the shell for a boat! Believeable? Well, read this from the "Queenstown

News" October 25, 1902. "Capt. Gustave Holty, a fisherman residing on Kent Island while fishing Tuesday caught a turtle which weighed 600 pounds. Its head was the size of a large water bucket. The turtle was raised from the water by a block and fall and it took 5 men to pull the turtle ashore".

Local expressions - "parlor chamber" - room over the parlor.

"Lay in" - supplies a farmer gave his hands for the winter, flour, sugar etc.

Customs - gathering corn "blades" while green for the winter stock food.

Place names that have fallen into disuse - "Phillips Corner" now Baker's Corner in Chester. "Steam Mill Bridge" bridge on old Rt 18 near the cemetery. Buzzardsville, Ticktown, Kirwan, Sharktown, Frederickstown, Babe Denny's Lane.

Kent Island products - Queenstown News Dec. 30, 1895 "The farmers of Kent Island have for many years been known as the best geese raisers in the State".

Recreation - fox hunting, jousting tournaments, baseball teams, horse-racing.

Organizations - Lime Kiln Club of Stevensville, Stevensville Cornet Brass Band, Junior Order of American Mechanics, Independent Order of Odd Fellows, Independent Protective Union, Epworth League, Order of the Knights of Pythias, Democratic Clubs.

We have almost no information about the Bloody Point and Love Point Lighthouses, the coastal trade with Baltimore & our nearby islands, Hog Island, Johnsons Island, Philpots Island, Bodkin and Long Marsh.

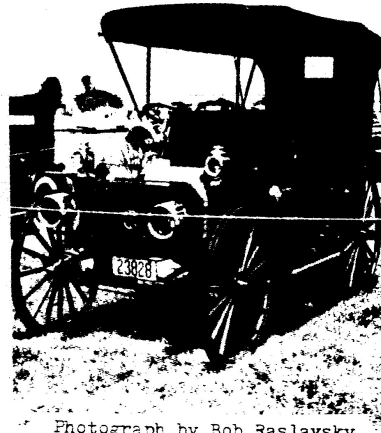
There are so many fragments of our history still fresh in the minds of our older citizens that should be recorded. We might find that it would lead to some kind of publication if we could organize it. If remote Tangier could do this, (Something Fishy From Tangier, 1974) we certainly can! Send your remembrances to: Mildred Schoch Box 562, Chester, Md. 21619

# KENT ISLAND'S 350TH ANNIVERSARY

Now that the dust has settled, it is time to look back at this summer's events. And what events they were! Thousands of people came to enjoy parades, antique automobiles, antique airplanes, arts and crafts exhibits, the house tour, ceremonies, and of course the presentation of the pageant, "A Patent for Conflict". Then there was the time capsule and the first day of issue envelope. Bands played and the Heritage Museum shared Kent Island's history.

The selection of pictures are but a few, but more are at the Cray House.

ANTIQUE CAR SHOW : The oldest a 1911 International.



Photograph by Bob Raslavsky

*Sole of Kent 1631*  
First English settlement in Maryland

Founded by

*W. Calborne*

(1600-1677-78)



Pennace  
"Long Tawie"  
First vessel  
built in  
Maryland

THE ENVELOPE : A Stearns Original

1981 350<sup>th</sup> Anniversary

ANTIQUE AIRPLANES : A biplane with admirers.



Photograph by Bob Raslavsky



TIME CAPSULE : Jan Leopold and  
Louis Goldstein, Is Louie getting  
in?

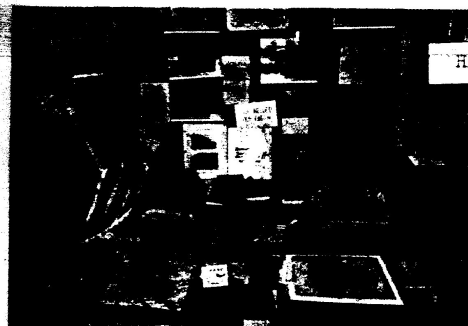
Catherine Lessner holding the  
Isle of Kent Poster.



It was a piece of cake.



Julius Grollman, Gov. Carvel,  
Trudy Guthrie and Mary White.



HERITAGE MUSEUM



Judy Price and Eve Solomon  
admire vase.



Some came by horse.



A PATENT FOR CONFLICT : A toast

PHOTOGRAPHY BY DAVID WAGNER  
EXCEPT AS NOTED

#### ARCHAEOLOGIST'S CORNER

So many of us have from time to time found arrowheads or pottery shards, but wonder how old it is. One good reference for this area is the Maryland Department of Natural Resources, Maryland Geological Survey, "An Archaeological Sequence in the Middle Chesapeake Region, Maryland" by Henry T. Wright, 1973. This is available from the Maryland Geological Survey, Merryman Hall, the Johns Hopkins University, Baltimore, Md. 21218 for \$2.00 plus tax.

#### BOOKS YOU MAY WANT TO READ

The Archives of Maryland volumes published from 1883 on are still available. Volumes I, III, IV, V, LIV are particularly of interest. These may be obtained from the Maryland Hall of Records in Annapolis.

An extremely well written book you may want to look at is John W. Rees, Tidewater Towns, City Planning in Colonial Virginia and Maryland, The University Press of Virginia, Charlottesville, 1972

#### ISLE OF KENT CALENDAR

March 19, 1982 at 7:30 PM in the Kent Island Elementary School library.

Speaker: Dr. Mary Matossias of the University of Maryland will talk on "A New Look at One's Past".

May 1, 1982, Cray House Opens.

May 8 and 9, 1982, Queen Anne's Days.

May 29, 1982, Kent Island Day.

June 13, 1982, at 8:00 PM in the Kent Island Elementary School library.

Program: "The Past, the Present, the Promise"

ISLE OF KENT is the quarterly newsletter of the Kent Island Heritage Society, Inc., a non-profit corporation, P.O. Box 321, Stevensville, MD 21666.

Communication and contribution of material should be addressed to the Editor:

Alexander Dunbar Speer  
14-A Shipping Creek Drive  
Stevensville, MD 21666  
Telephone: (301) 643-2965

Effort is made to publish accurate information, but no responsibility can be assumed by the Kent Island Heritage Society, Inc. or the editor in the event of claim of loss or damage arising from any recommendation. Statements attributed to individuals do not necessarily reflect official policy and position of the Kent Island Heritage Society, Inc.

Annual membership dues are \$5.00. Application for membership should be sent to:

Catherine Kirwan, Membership  
Chairman  
The Kent Island Heritage Society,  
Inc.  
Chester, MD 21619

Notice of change of address or problems with delivery should be directed to:

Alexander D. Speer, Editor  
14-A Shipping Creek Drive  
Stevensville, MD 21666  
Telephone: (301) 643-2965.

The Kent Island Heritage Society, Inc.  
Post Office Box 321  
Stevensville, MD 21666